



UPPER-STAGE MACHINERY

UNDER-STAGE MACHINERY

CONTROL SYSTEMS

LIGHTING

ELECTROACOUSTICS

OTHER STAGE EQUIPMENT

THEATRES  
OPERA HOUSES  
CONCERT HALLS  
CULTURAL CENTRES  
MOVIE THEATRES  
MULTIFUNCTIONAL HALLS  
CRUISE SHIPS



PLANNING  
PROJECT  
ENGINEERING  
PRODUCTION  
ASSEMBLY  
INSTALLATION  
MAINTENANCE

*„We give you the best tools. The rest is on you.“*



**WE ARE GRADIOR TECH** ■ For almost 30 years we have been supplying theatre and stage technology, offering a complete range of services, from design and manufacture to assembly, installation and after-sales service. We focus on turnkey deliveries, but we are also happy to supply you with a single piece of equipment for any specific purpose. ■ The integration of sales, design and engineering under one roof together with production management and manufacturing ensures efficient project handling. ■ Over the years we have completed hundreds of projects around the world, from local theatres to world-renowned stages, from local community centres to multi-purpose multi-genre arenas. ■ Whether you are an investor, architect, expert designer or operator of a cultural facility, we are your experienced partner from the architectural design and approval process through design and workshop drawings and manufacture up to the assembly and installation and final handover of the project. ■ From premiere to the last performance. You can rely on us.

**WE VALUE** ■ Our customers ■ Qualified staff ■ Craftsmanship ■ ISO 9001:2016 certified

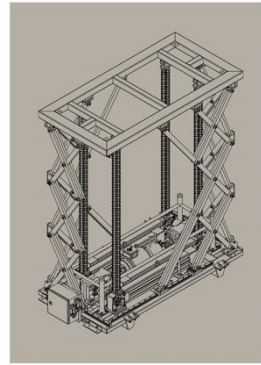
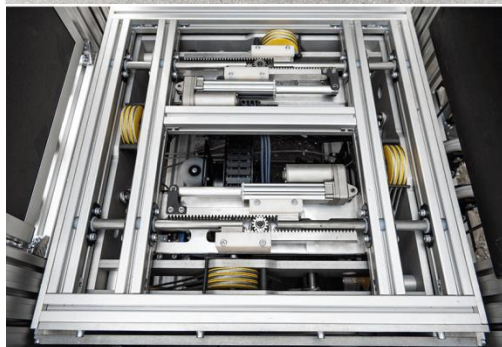




**WE DELIVER** ■ **UPPER-STAGE MACHINERY** ■ Flying systems ■ Rigging systems ■ Stage hoists ■ Point hoists ■ Lighting bridges ■ Galleries ■ Portal bridges ■ Trusses ■ Portal towers ■ Stage curtains ■ Backdrops ■ **UNDER-STAGE MACHINERY** ■ Stage elevators ■ Stage lifts ■ Scissor stage lifts ■ Stage platforms ■ Orchestra elevators ■ Revolving stages ■ Stage wagons ■ Trap lifts ■ Telescopic elevations ■ **CONTROL SYSTEMS** ■ Hardware ■ Switchboards ■ Electrical installations ■ Software ■ **LIGHTING** ■ Stage lighting ■ Emergency & working lighting ■ **ELECTROACOUSTICS** ■ Electroacoustics ■ Communication ■ Stage manager systems ■ **OTHER STAGE EQUIPMENT** ■ Seats ■ Textile equipment ■ Lifted platforms ■ Mobile platforms ■ Stage decorations

**WE PROVIDE** ■ Design ■ Project ■ Engineering ■ Manufacture ■ Installation ■ Service ■ Maintenance ■ Turn-key supplies ■ Original concepts

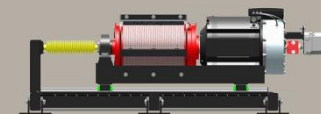
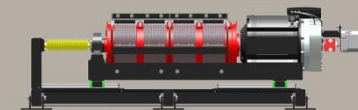
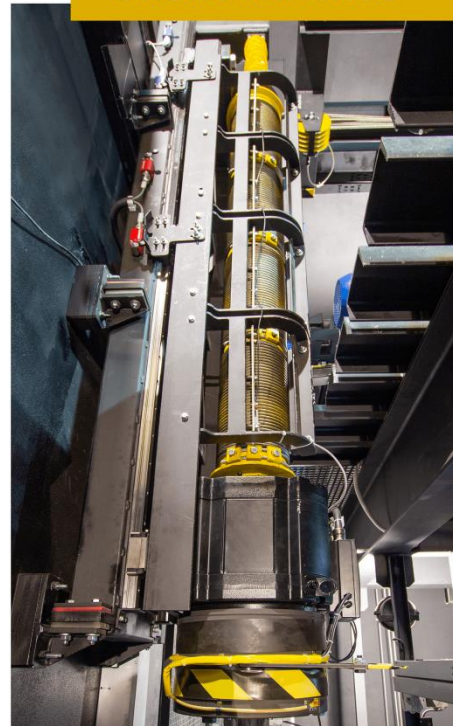
## Stage Traps



## RCL Platforms



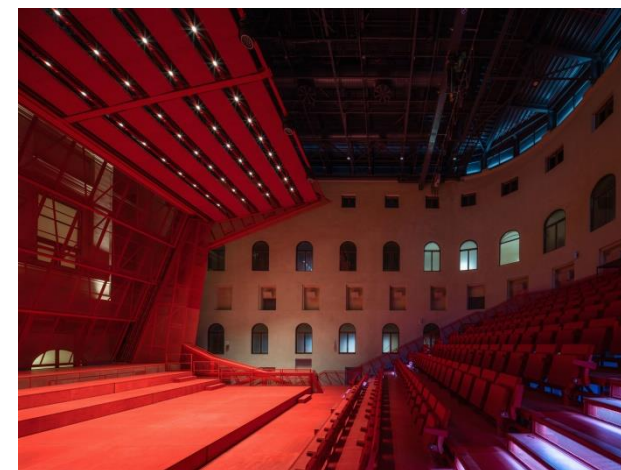
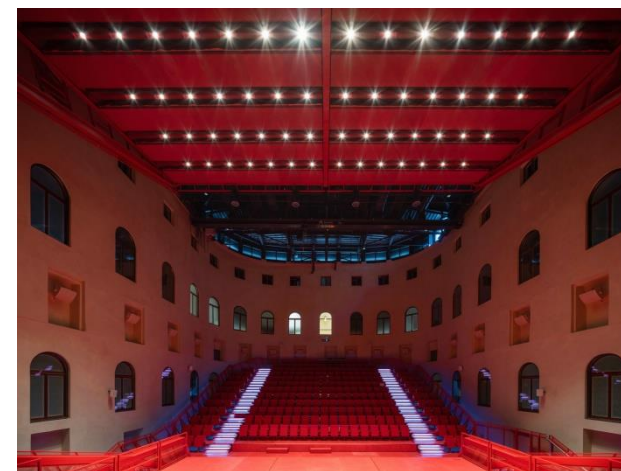
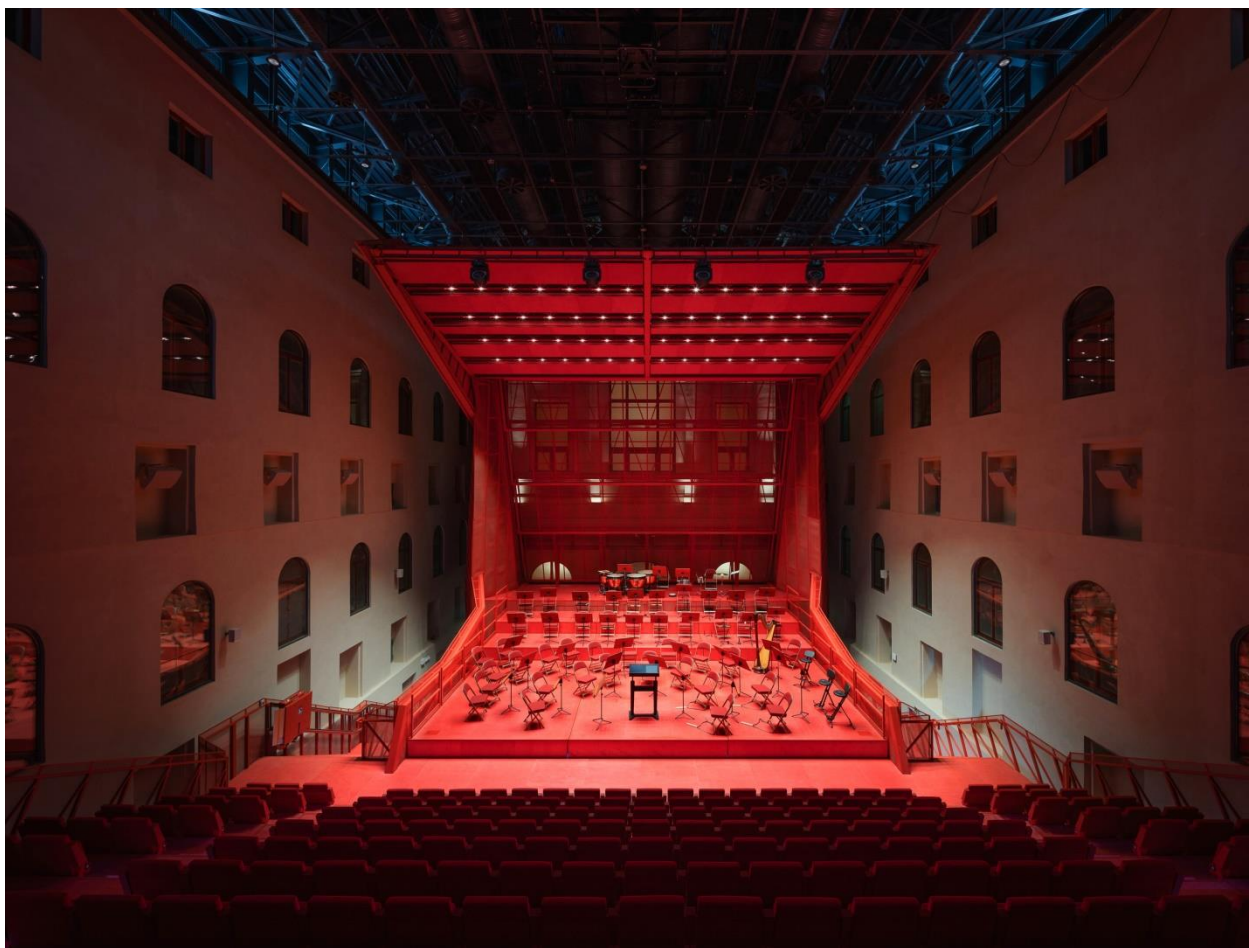
## Silent winches



# OUR PROJECTS SELECTION

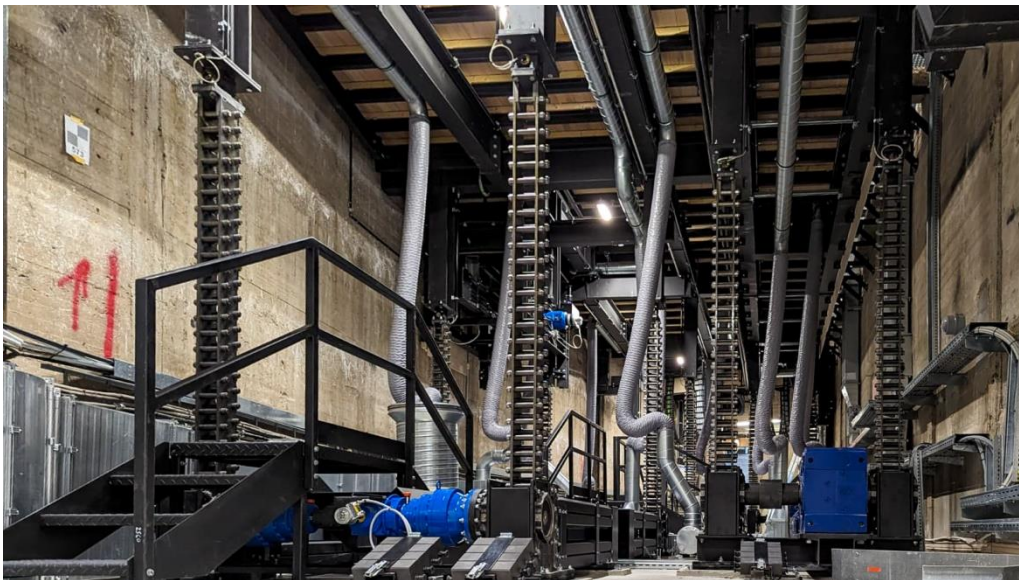
## 2023 ■ Concert Hall in Imperial Spa ■ Karlovy Vary (CZ)

Supply and installation of supporting steel structures, telescopic elevations incl. chairs, lifted platforms, reflective and acoustic panels and cladding, lift for disabled people, stage lighting, control system for the elevation and stage technology.



## 2023 ■ Deutsche Oper ■ Berlin (DE)

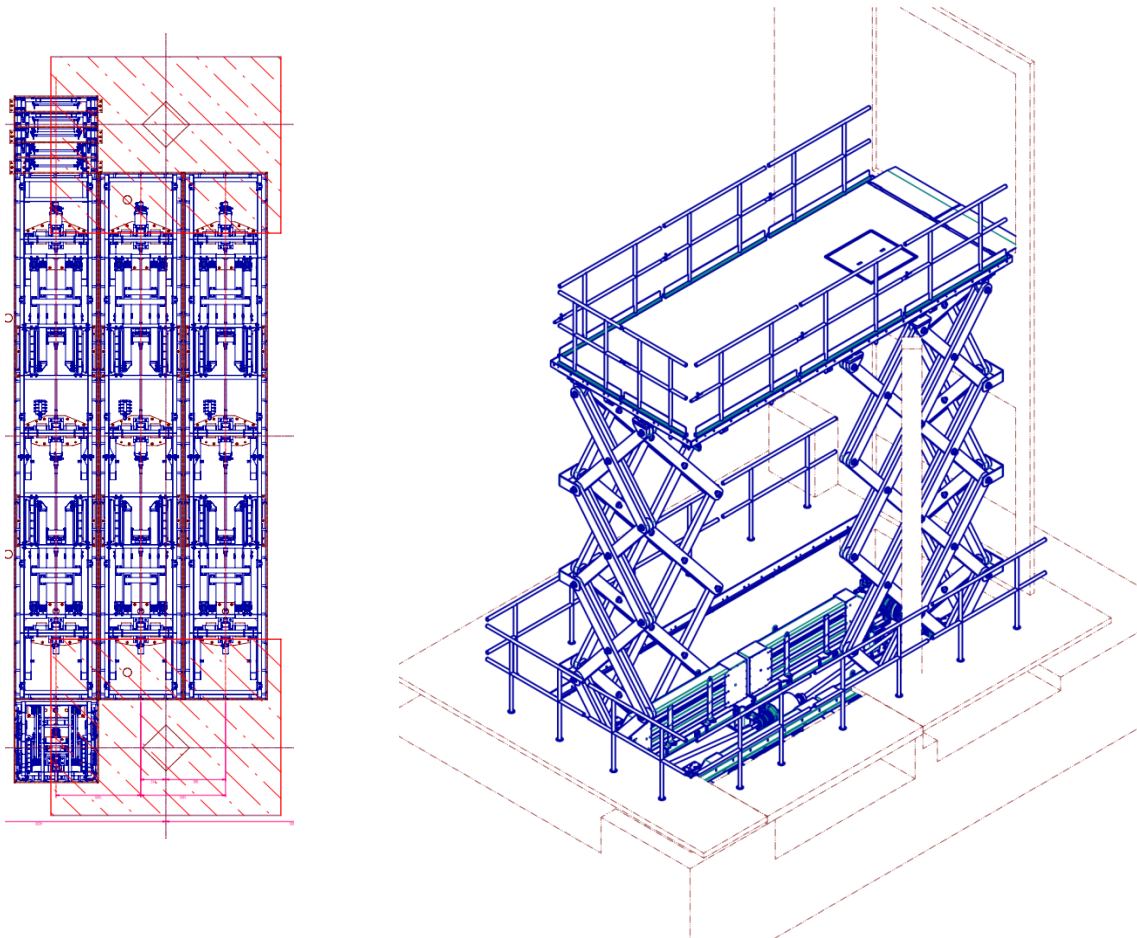
Supply and assembly of double-deck orchestra pit platforms, leveling platforms, trap lift and supporting structures (supplied for ARTTHEA Bühnentechnik GmbH)





## 2022 ■ Helvetia Campus ■ Basel (CH)

Supply of scissor stage platforms (supplied for ARTTHEA Bühnentechnik GmbH)



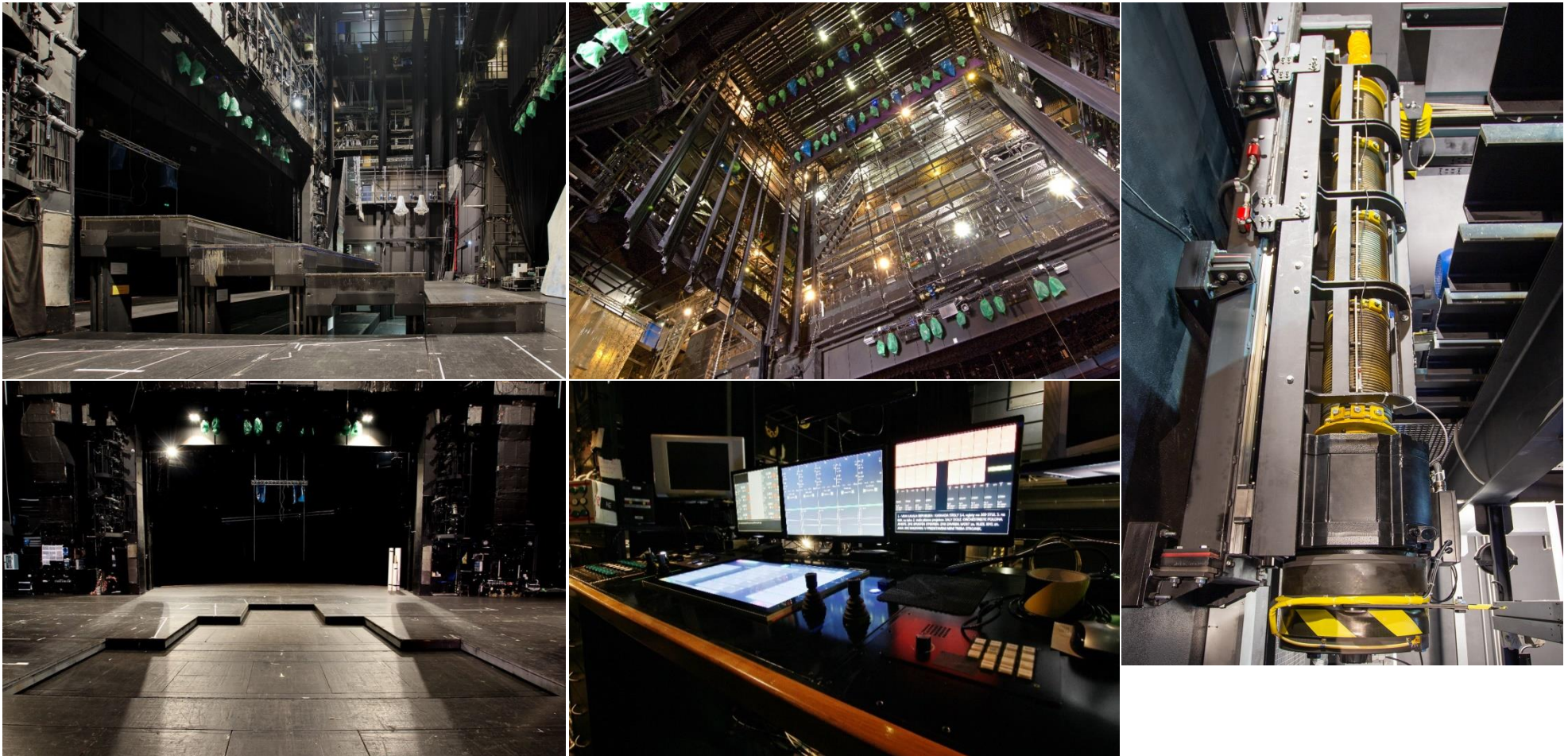
## 2022 ▪ Universal Touring Theatre in Verkhnyaya Pyshma (RU)

Complete supply and assembly of upper and lower stage machinery incl. control system and transformable auditorium incl. control system.



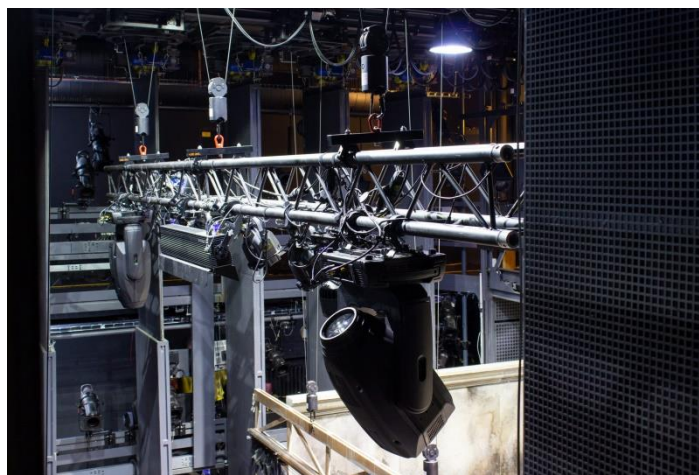
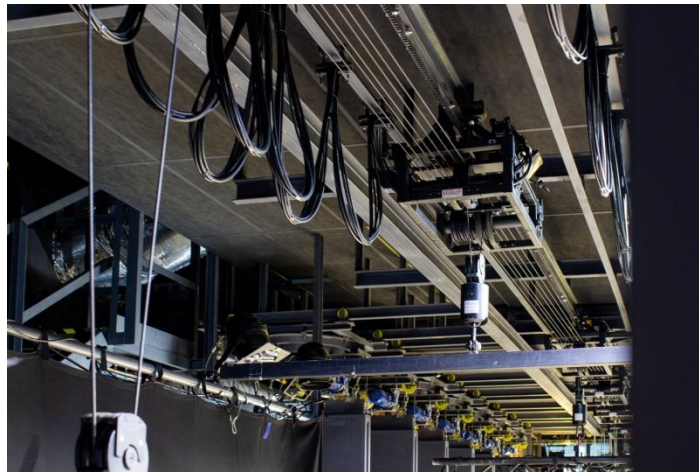
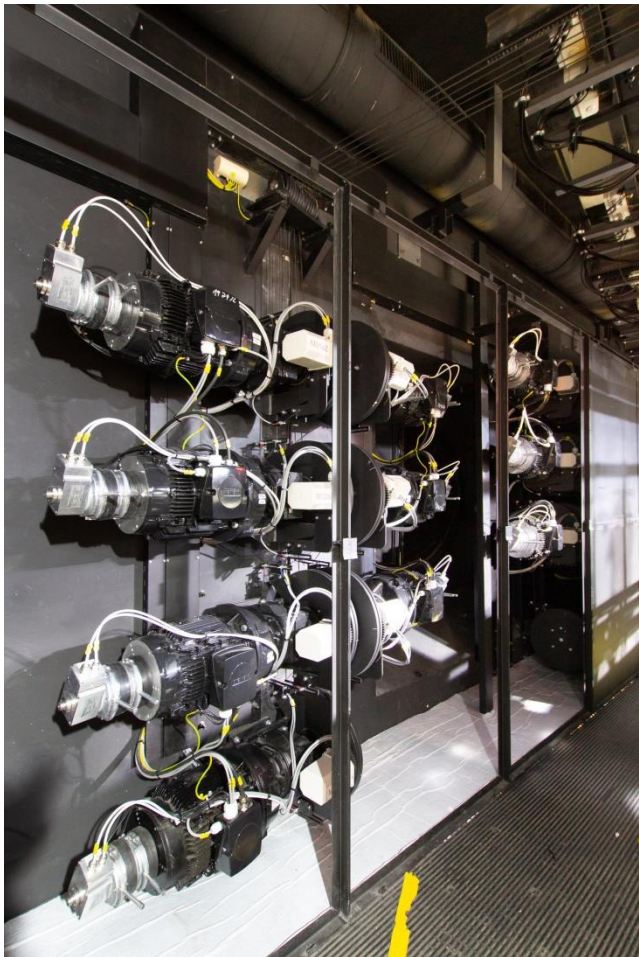
## 2022, 2004 ■ The Brno City Theatre ■ Music Theatre (CZ)

Complete supply and assembly of upper and under stage machinery, control system, stage lighting, sound and electroacoustics.



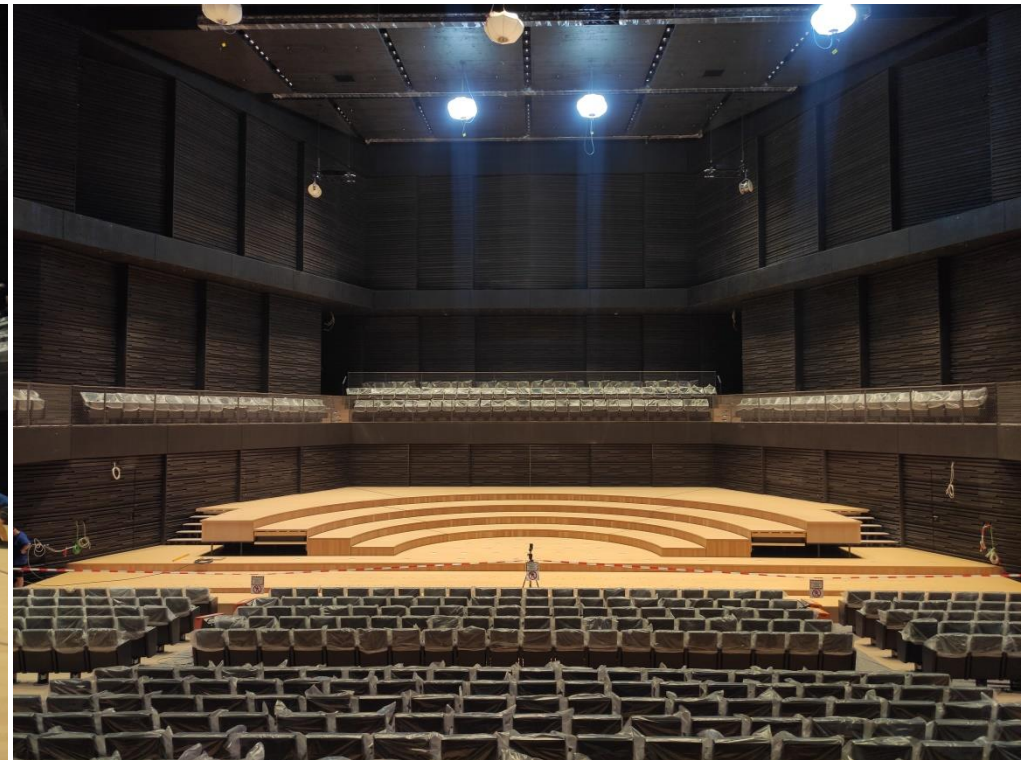
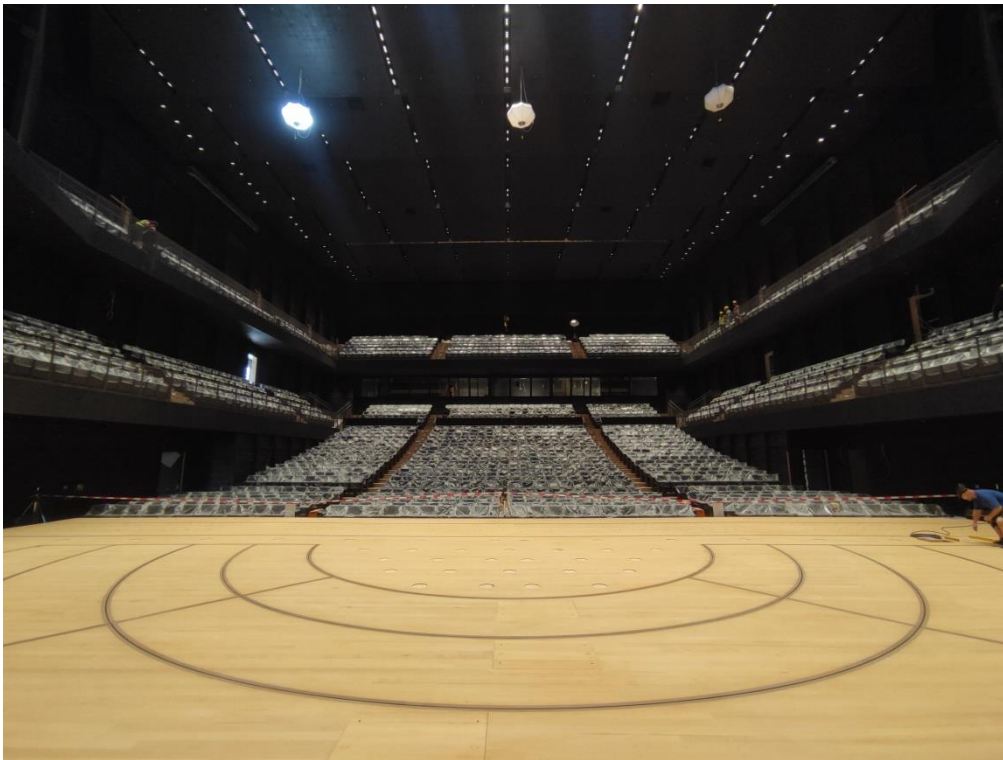
## 2022, 2005 ■ The Reduta Theatre ■ Brno (CZ)

Supply and assembly of machinery, control system, stage lighting, audio & electroacoustics, interior design.



## 2021 ■ Interimsquartier Gasteig ■ Munich (DE)

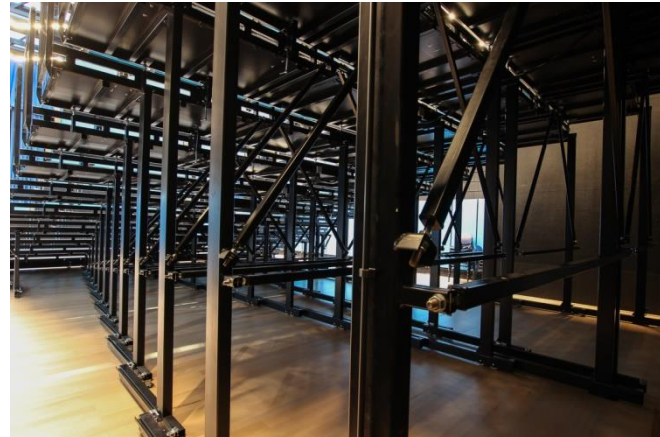
Supply of stage platforms and upper machinery (supplied for ARTTHEA Bühnentechnik GmbH)



## 2020, 2006 ■ Music Theatre in Karlin ■ Prague (CZ)

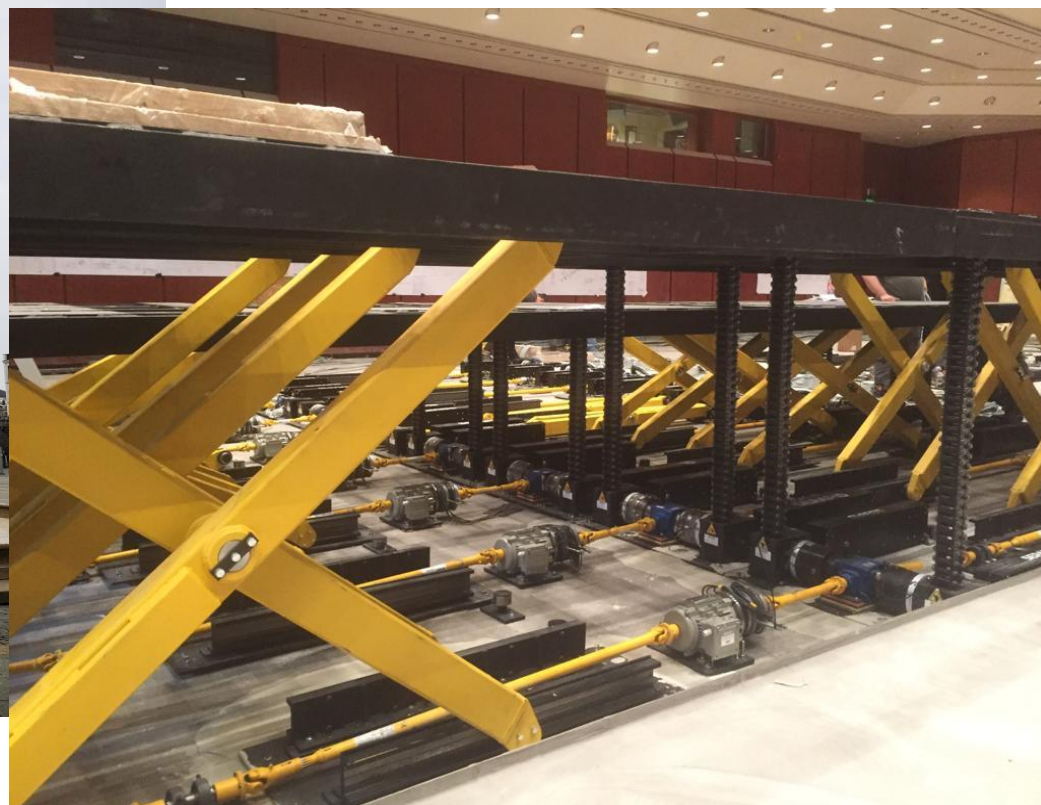
Rehearsal room modification - supply of scissor stage platforms, mobile lift, incl. controls and telescopic seating.

Main stage - supply and assembly of stage technology and control system.



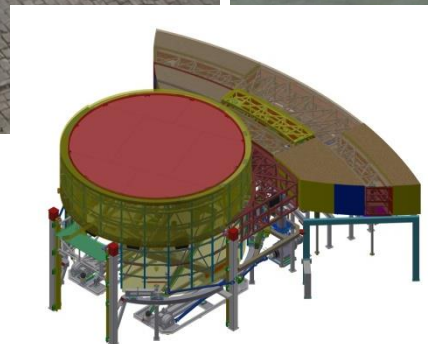
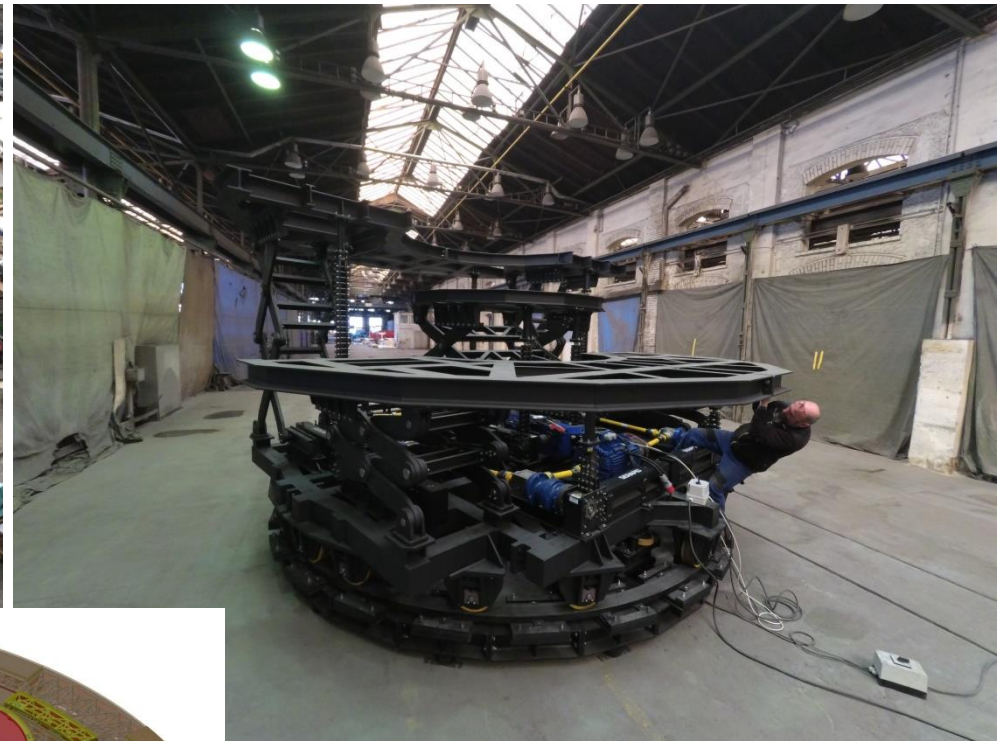
## 2019 ■ Alte Oper ■ Frankfurt am Main (DE)

Supply of scissor stage platforms (supplied for ARTTHEA Bühnentechnik GmbH)



## 2019, 2017, 2016 ■ Cruise ships AIDA (2), COSTA (2), SAGA (2)

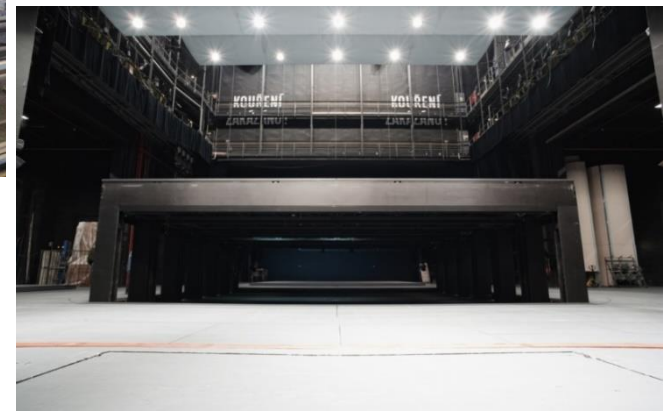
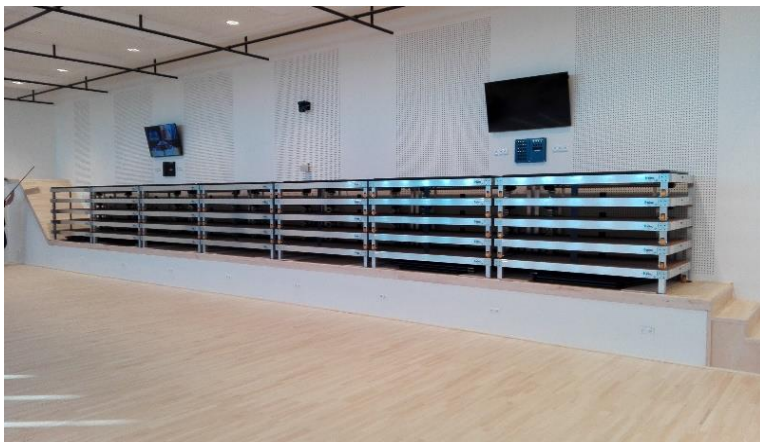
Multiple supplies and installations of various lifted platforms, revolving stages, leveling steps and other pieces of equipment (supplied for various customers)





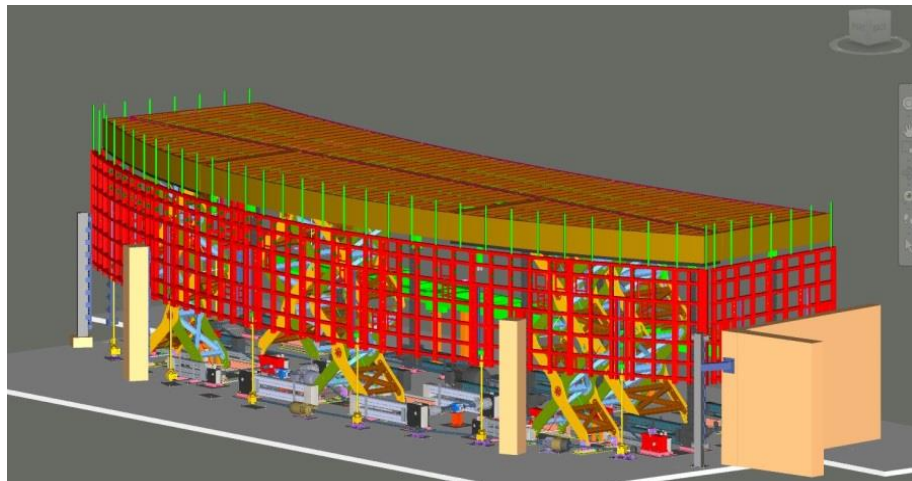
## 2018, 2015, 2011, 2010, 2009, 2004 ■ Janacek Theatre ■ Brno (CZ)

Complete supply and assembly of upper and lower stage machinery incl. control system, PA Acoustics, auditorium lighting, acoustic shell and other parts.



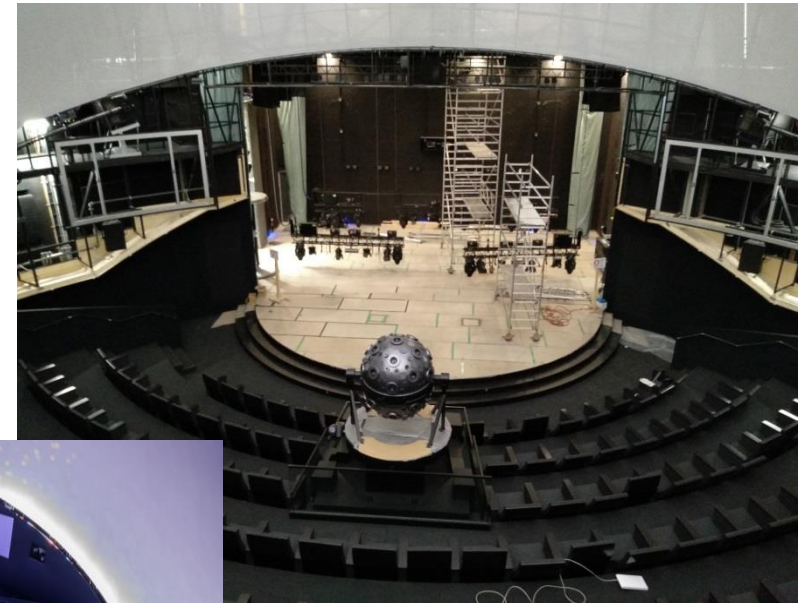
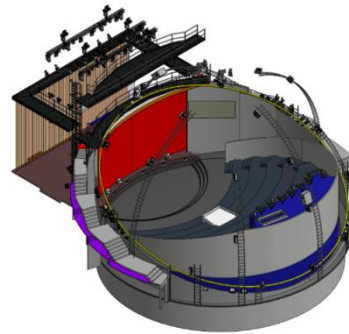
## 2018 ■ Concert Hall in Zaryadye Park ■ Moscow (RU)

Design, manufacture, supply and assembly of stage platforms, orchestra pit platforms, stage floor and telescopic tribune (supplied for DOKA CENTR)



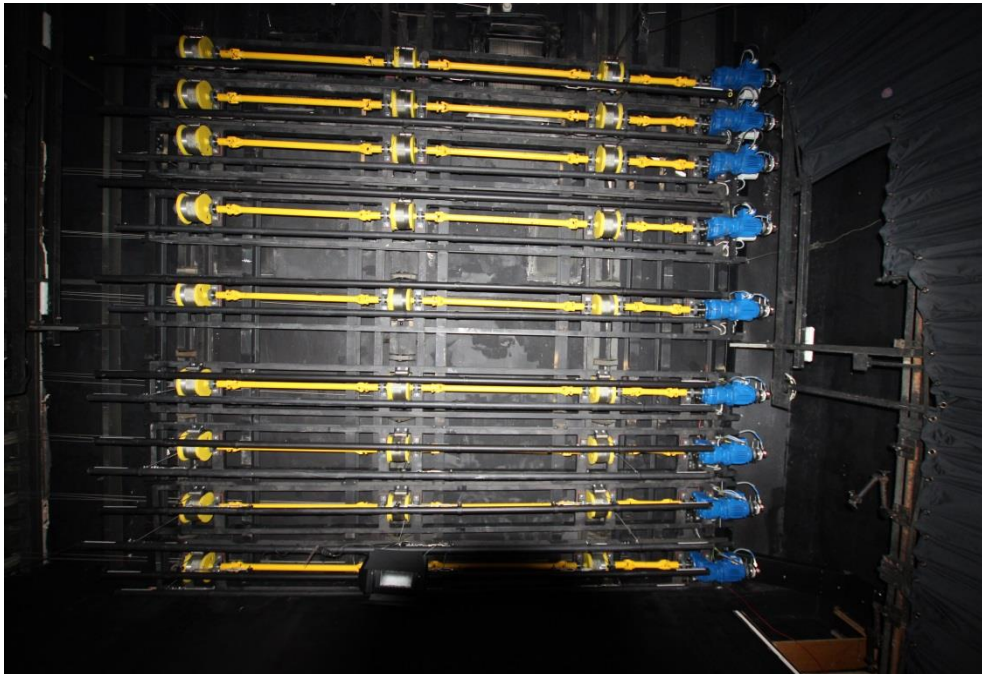
## 2018 ■ Science Centre Experimenta ■ Heilbronn (DE)

Supply and assembly of steel structures, upper and lower machinery, esp. Revolving auditorium (supplied for Kraftwerk Living Technologies GmbH)



## 2018 ■ Studio Marta (University Theatre) ■ Janáček Academy of Music and Performing Arts ■ Brno (CZ)

Design, manufacture, supply and assembly of upper and lower stage machinery, control system, stage curtains, scenic lighting, audio and video technologies, HVAC



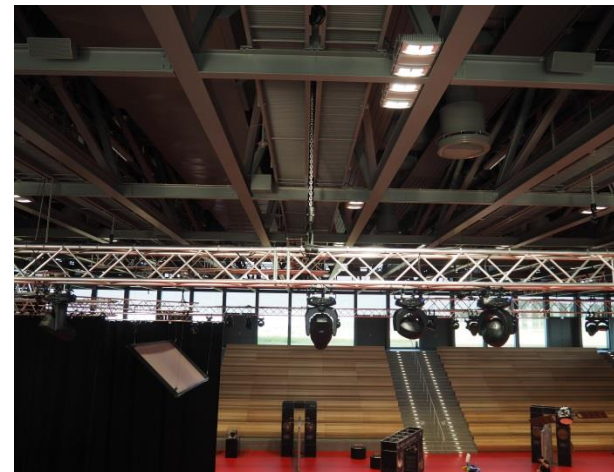
## 2017 ■ Neuer Markt ■ Ingelheim (DE)

Supply and assembly of upper and lower machinery, bar hoists, elevated auditorium platform, transport platform (supplied for ARTTHEA Bühnentechnik GmbH)



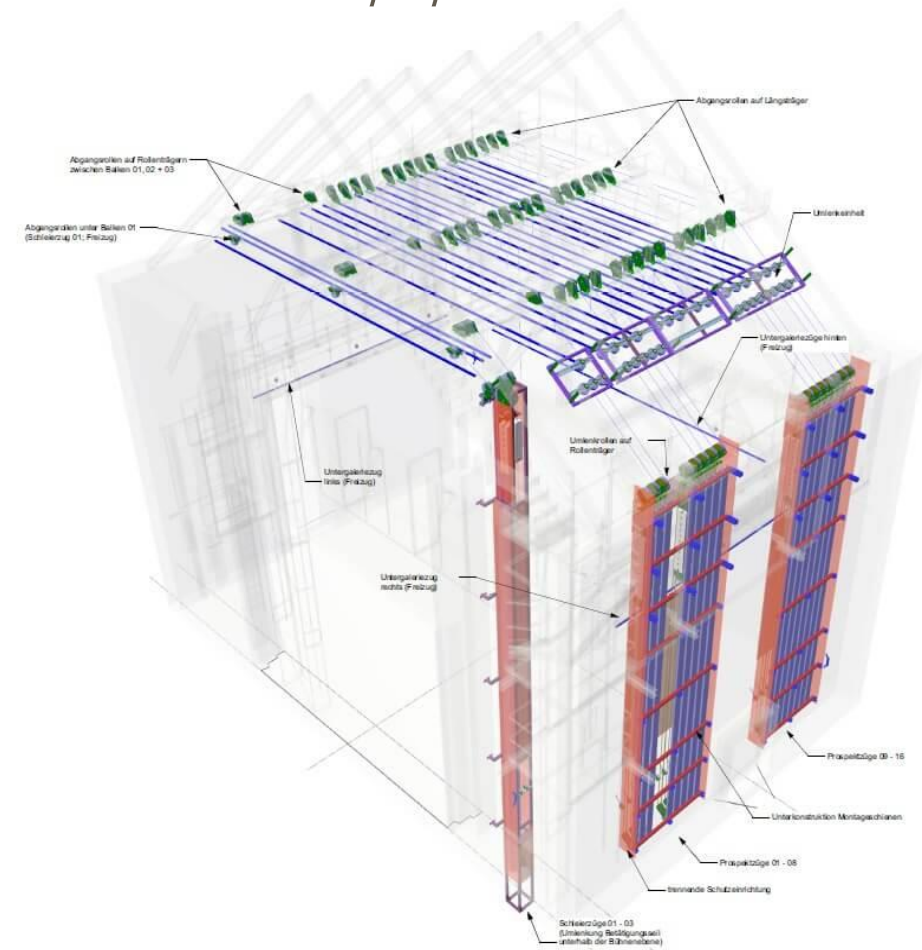
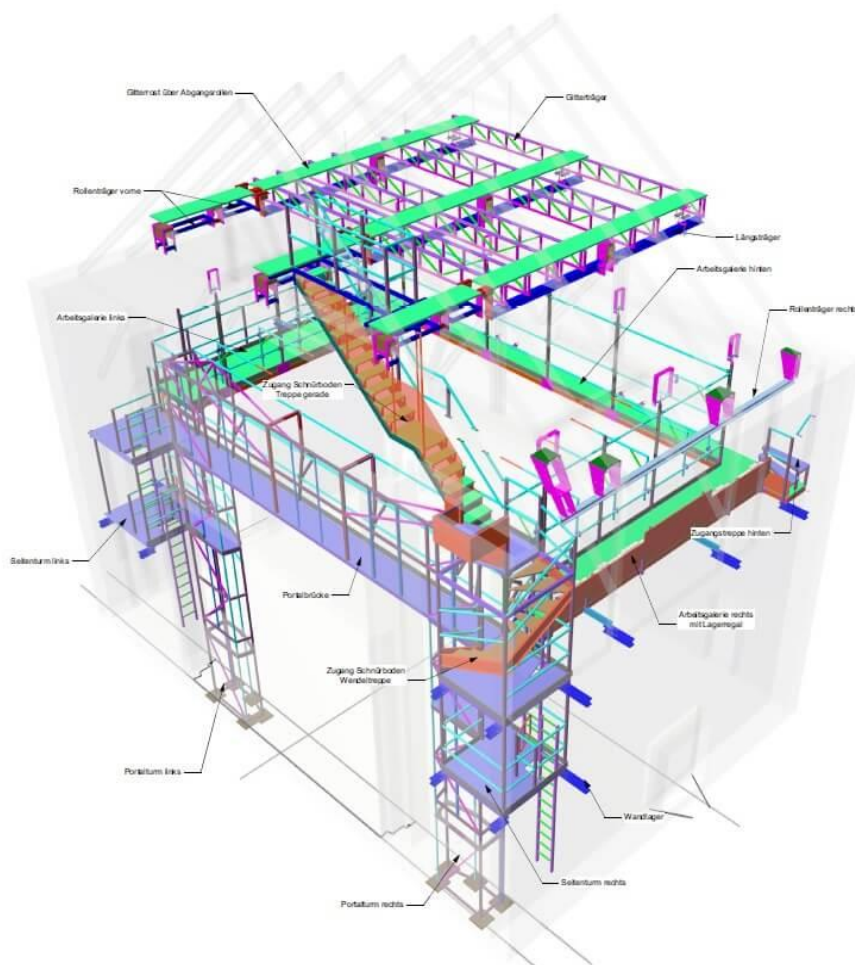
## 2017 ■ Carmen Würth Forum ■ Künzelsau (DE)

Supply and assembly of steel structures and upper and lower machinery, bar hoists, elevated auditorium platform (supplied for ARTTHEA Bühnentechnik GmbH)



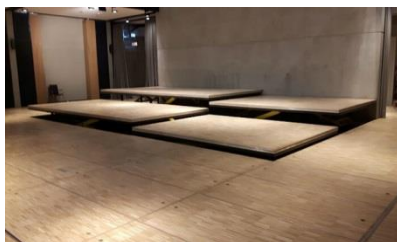
# 2016 ■ ST. PAULI Theatre ■ Hamburg (DE)

Supply and assembly of fixed steel structures and manual fly system



## 2016 ■ PS Granary ■ Einbeck (DE)

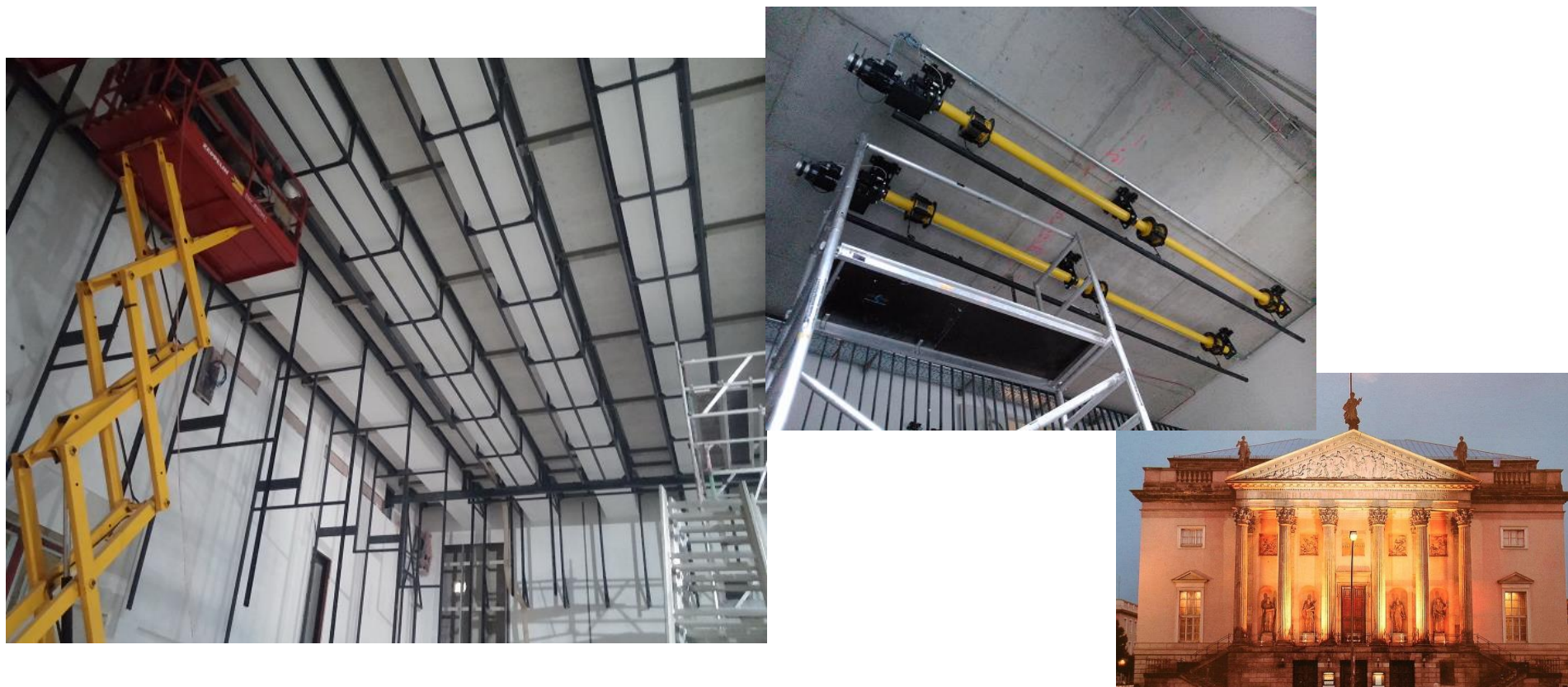
Supply and assembly of stage platforms (supplied for ARTTHEA Bühnentechnik GmbH)





## 2015 ■ Deutsche Staatsoper ■ Probebühne I, II ■ Berlin (DE)

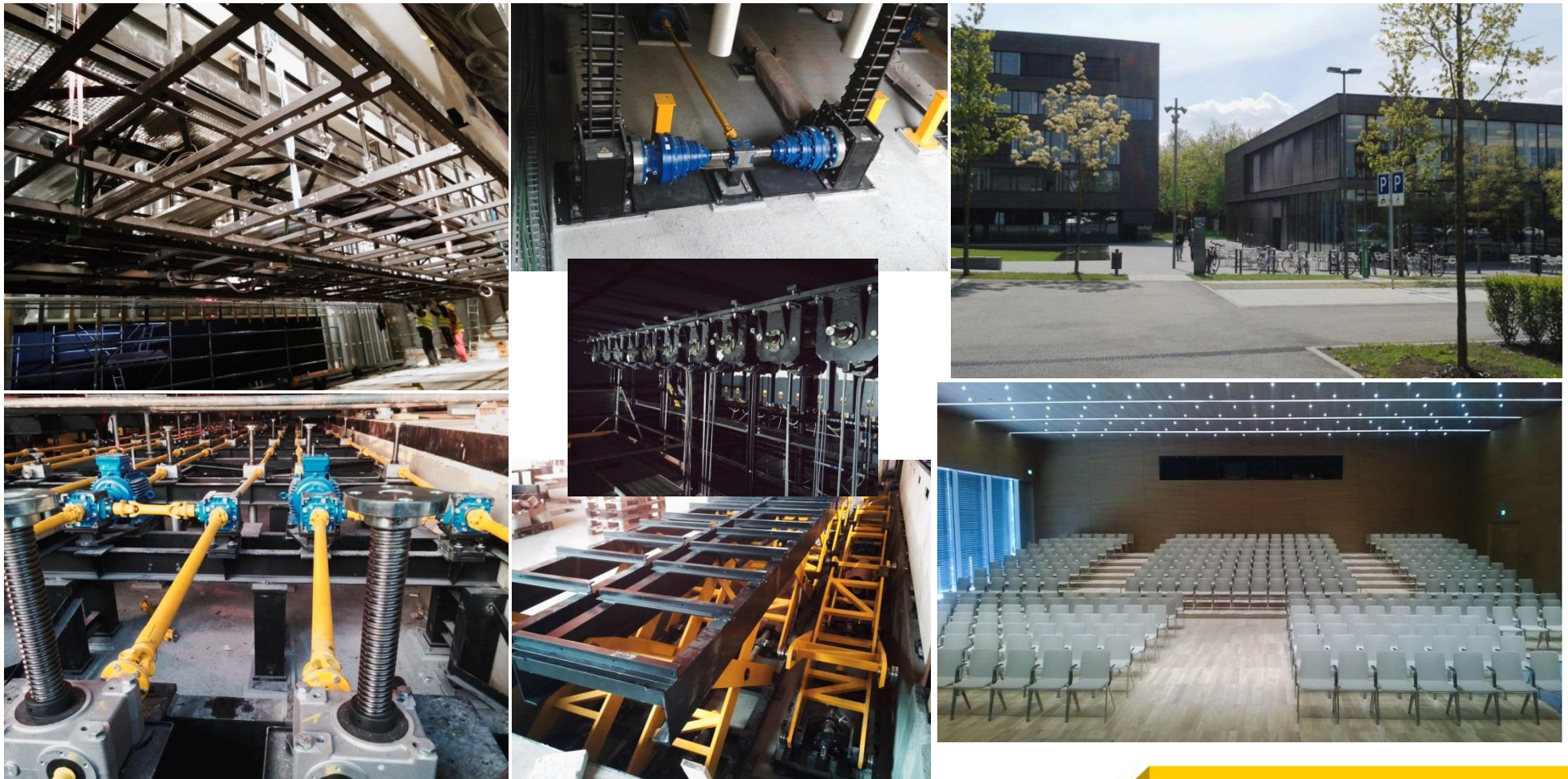
Supply and assembly of point-hoists, horizontally moving working bridge, under-ceiling tube grid and consoles for wall lighting. (supplied for ARTTHEA Bühnentechnik GmbH)



[https://en.wikipedia.org/wiki/Berlin\\_State\\_Opera](https://en.wikipedia.org/wiki/Berlin_State_Opera), photographer: JosefLehmkuhl

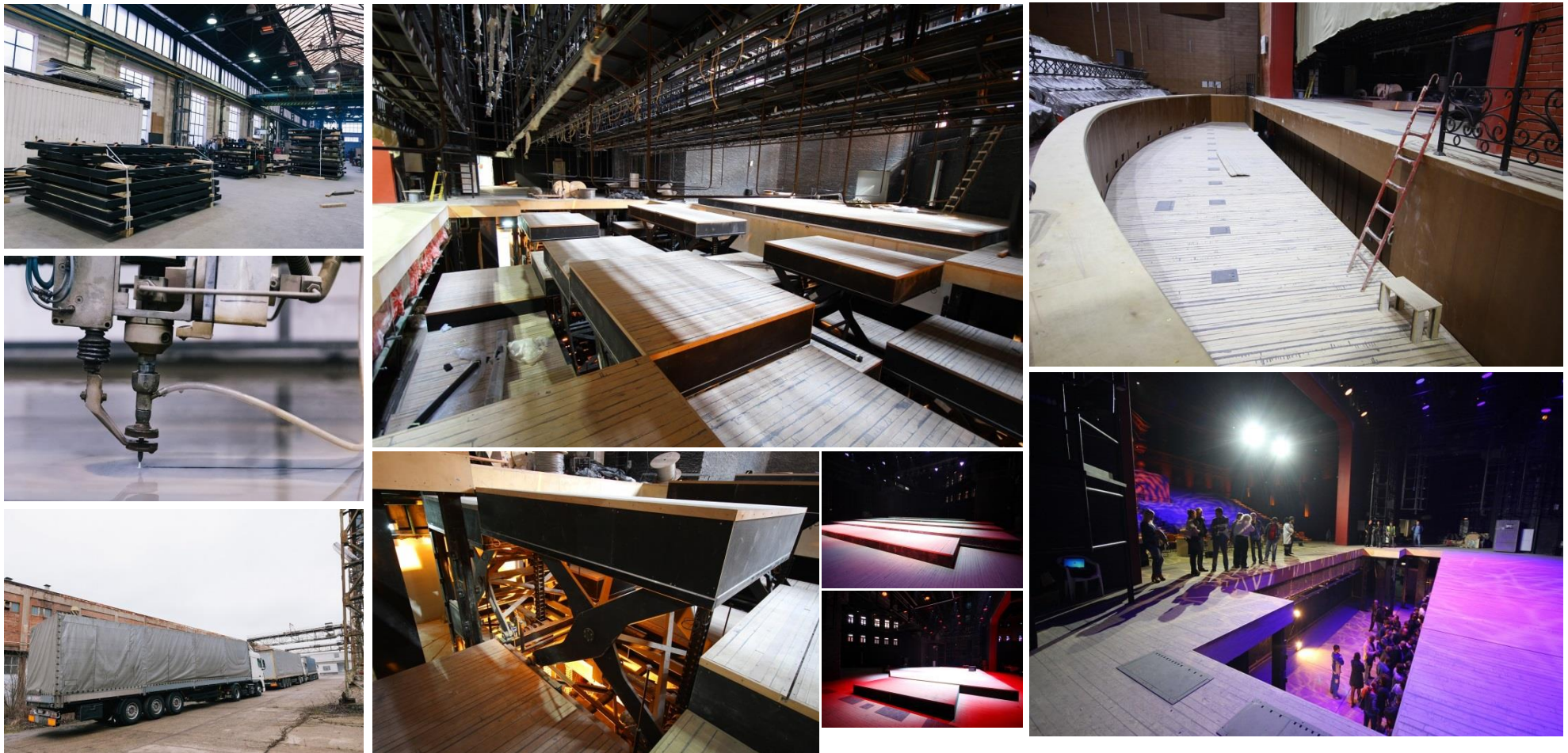
## 2015 ■ Heilbronn Bildungscampus Aula (DE)

Supply and assembly of complete steel structures, upper and lower stage machinery, projection screens (LED WAND) (supplied for ARTTHEA Bühn. GmbH)



## 2015 ■ Gelikon Opera ■ Moscow (RU)

Supply and installation supervision of lower mechanics – stage platforms and stage wagons (supplied for DOKA CENTR)



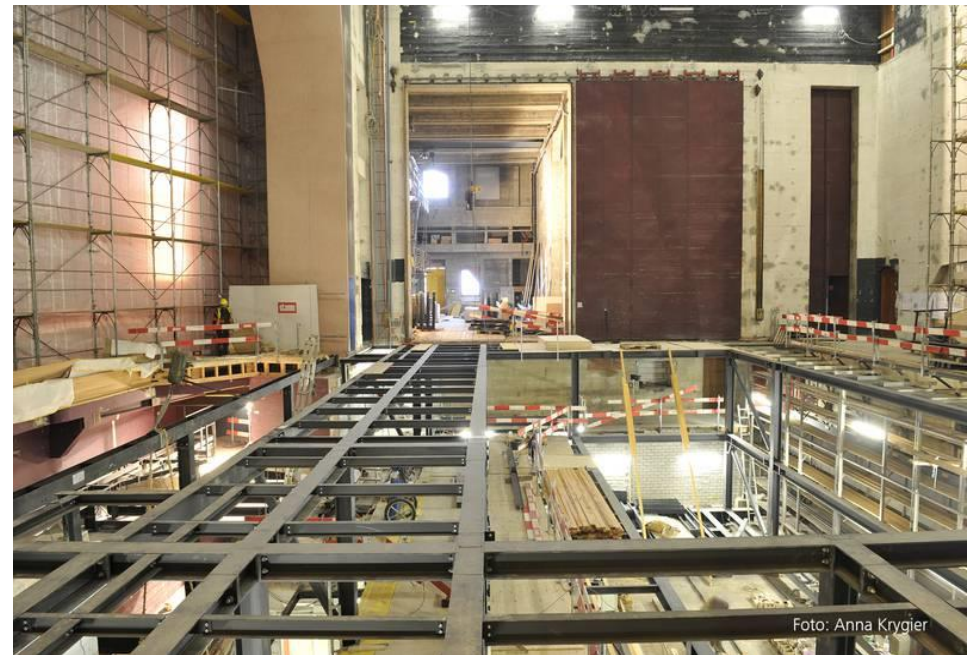
## 2014 ■ Cultural centre Neftyanik ■ Tyumen (RU)

Supply and assembly of stage technology and control system for three halls.



## 2014 ■ Goetheanum ■ Dornach (CH)

Supply and assembly of steel structures – rigging loft, working catwalks, lower stage, orchestra pit, side stage installations. Supply and assembly of speaker`s desk drive unit.

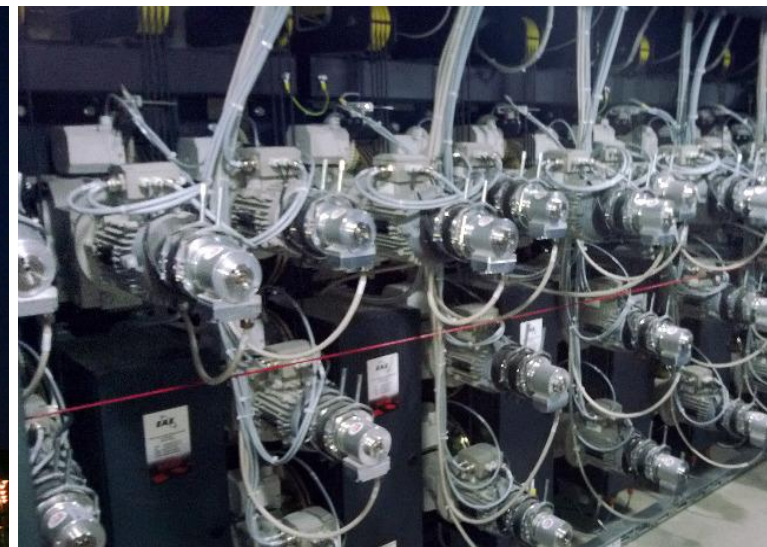


## 2013 ■ Städtische Bühnen Frankfurt am Main ■ Kammerspiele (DE)

Reconstruction of upper stage machinery (supplied for EAE Ewert Automation Electronic GmbH).



Image source: <http://www.rmv.de> (© Schauspiel Frankfurt - Birgit Hupfeld)



## 2013 ■ Musikkens Hus Nordjylland ■ Aalborg (DK)

Supply and assembly of 10 pcs of multiple orchestra risers (supplied for SBS Bühnentechnik GmbH).

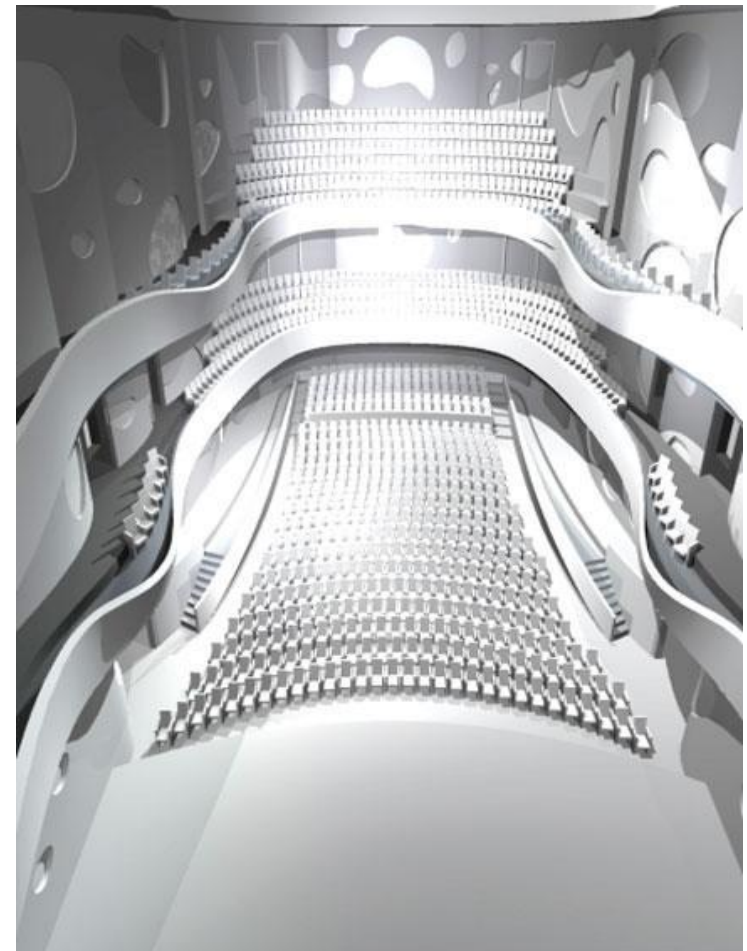
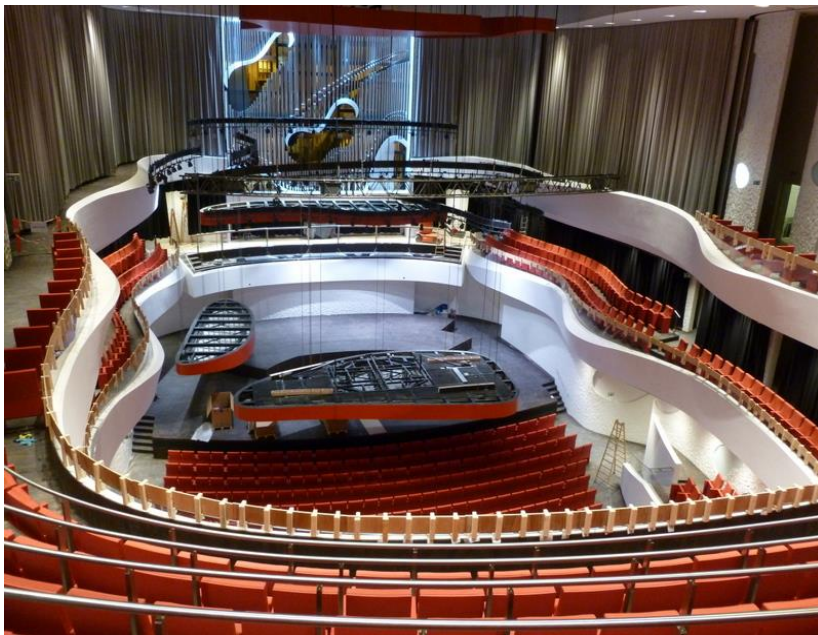


Image source: <http://www.musikkenshus.dk>

## 2013 ■ Classic Theatre of Opera and Balet ■ Astana (KZ)

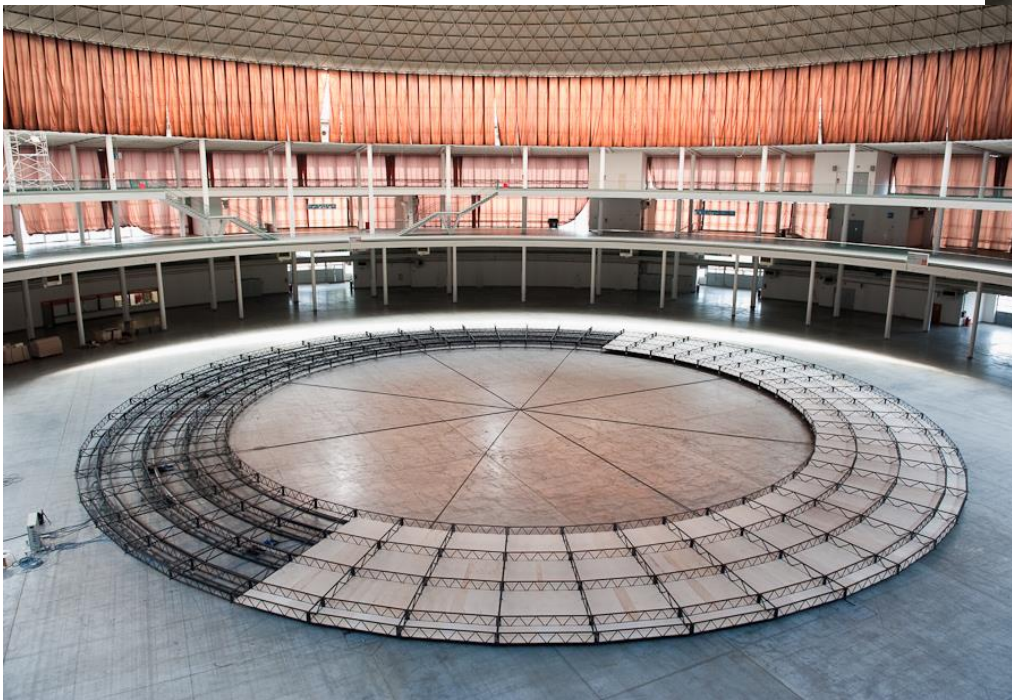
Supply of orchestra pit platforms, leveling platforms, decoration lift, wagons for seats (supplied for SBS Bühnentechnik GmbH).





## 2013 ■ „Kazan Arena“ ■ Kazan ■ Tatarstan republic (RU)

Supply and assembly of central revolving stage with Ø48m diam. incl. control system for Opening ceremony of the 27th Summer Universiade in Kazan, 2013.



## 2012 ■ Winterfestspielhaus ■ Erl (A)

Supply and assembly of orchestra pit elevator, stage lift and catwalks, plus galleries.

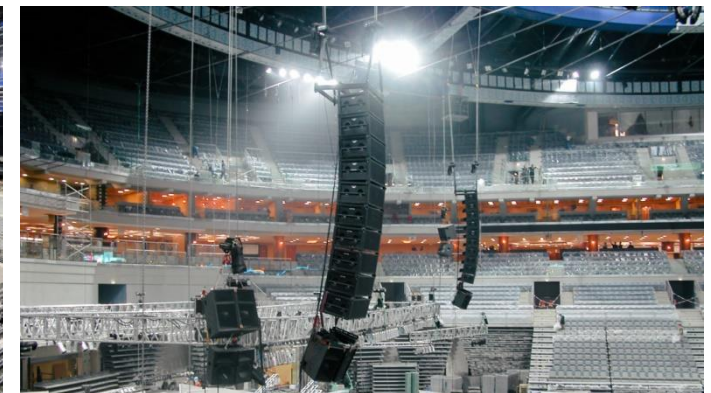
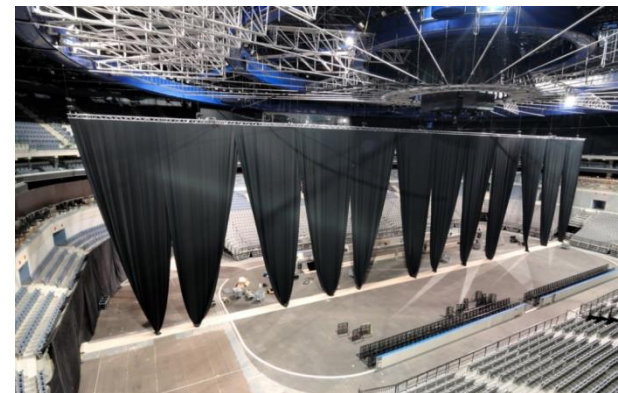
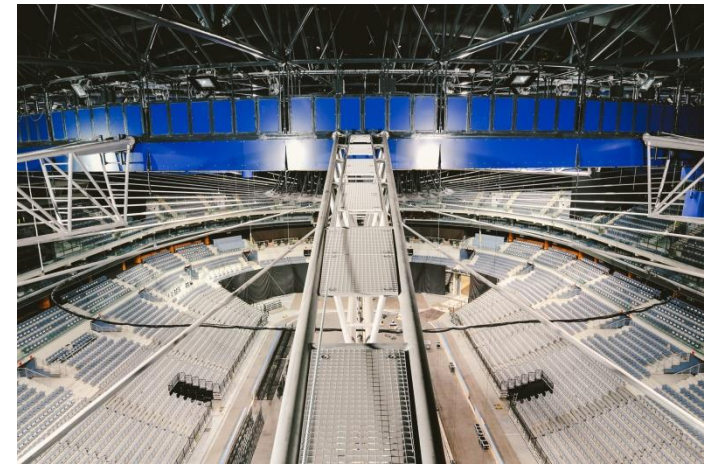
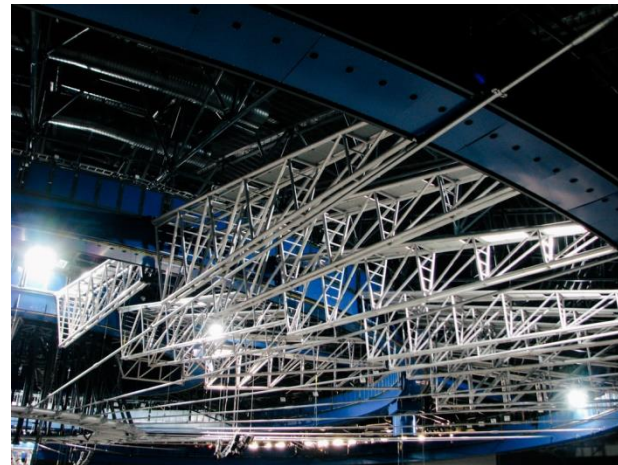


Image source: <http://www.tiroler-festspiele.at>

## 2009, 2004 ■ O2 Arena ■ Multi-functional hall ■ Prague (CZ)

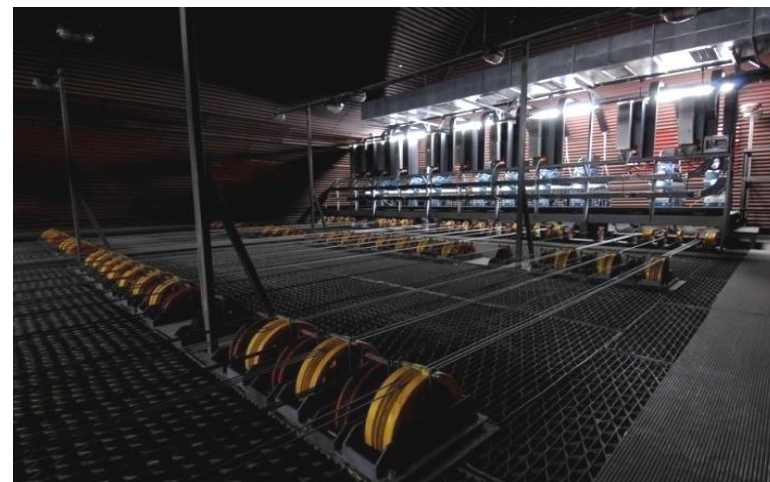
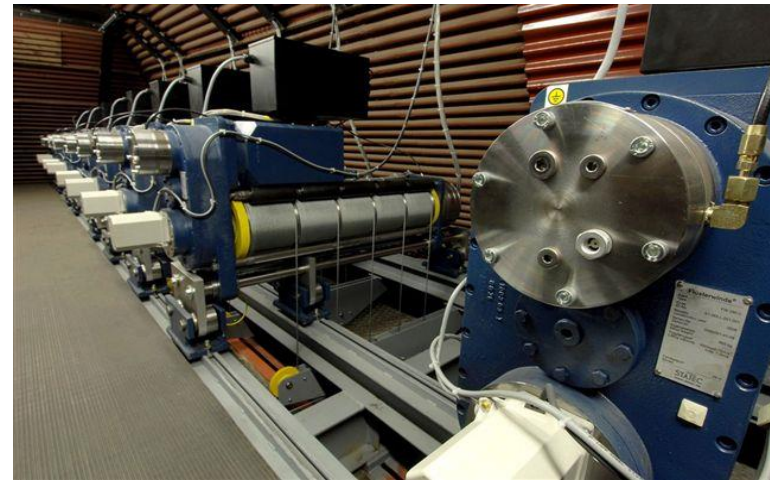
Supply and assembly of upper and lower stage machinery and components of roof structure (radial beams).

Supply and assembly of drapery (curtains).



## 2007 ■ The National Theatre ■ Prague (CZ)

Supply and assembly of flying system, incl. control system.



## OUR PEOPLE HAVE GATHERED EXPERIENCE ON THESE AMAZING PROJECTS

Concert Hall in Imperial Spa Karlovy Vary ▪ Deutsche Oper Berlin ▪ Helvetia Campus Basel ▪ Reduta Theatre Brno ▪ House of Digitalization Tulln ▪ Brno City Theatre, Musical Hall, Brno ▪ FlyOver flying theater attraction Las Vegas ▪ Gasteig Cultural Centre, Philharmonie, Munich ▪ The State Opera Prague ▪ Hungarian State Opera Budapest ▪ Music Theatre Karlin Prague ▪ Cruise ships Aida2, Costa2, Saga2, Costa, Saga, Aida ▪ Alte Oper Frankfurt on the Main ▪ The Slovak National Theatre Bratislava ▪ Concert Hall Zaryadye Moscow ▪ Science Centre Heilbronn ▪ Carmen-Würth-Forum Künzelsau ▪ Culture and Entertainment Hall and The Further Education Centre Ingelheim ▪ Neuer Markt Ingelheim ▪ National Theater Weimar ▪ Bad Neustadt City Hall ▪ House of World Cultures Berlin ▪ PS-Speicher Einbeck ▪ Carmen Würth Forum Künzelsau ▪ HfS Ernst Busch Berlin ▪ St. Pauli Theater Hamburg ▪ KKM Dresden ▪ Prague Municipal House ▪ National Theater Brno, Mahen Theater, Brno ▪ Rychnov nad Kněžnou Castle Riding School ▪ Stadthalle Lohr ▪ Theater Arena Bratislava ▪ Kammerspiele Berlin ▪ Janáček Theater Brno ▪ Händel Halle ▪ F.X. Šalda Theater Liberec ▪ Parkhause Hamburg ▪ FAMU Prague ▪ Theater der Altmark Stendal ▪ Berlin – Theater an der Parkaue Berlin ▪ Deutsche Staatsoper, Rehearsals I & II, Berlin ▪ Heilbronn Bildungscampus Aula ▪ Gelikon Opera Moscow ▪ Comic Opera Berlin ▪ Cultural centre Neftyanik Tyumen ▪ Friedrichstadt Palast Berlin ▪ City Theater Brno ▪ Stadttheater Meißen ▪ Staatstheater-Ballhof Hannover ▪ Deutsche Oper Berlin ▪ Sanierung Bühnen Köln ▪ Sergiev Posad Moscow Theological Academy ▪ Goetheanum Dornach ▪ Opernhaus und Theater Köln am Rhein ▪ Kladno City Theater ▪ Frankfurt Opera ▪ Conference center Stadthalle Kassel ▪ Städtische Bühnen (Kammerspiele) Frankfurt am Main ▪ Deutsches Theater (Kammerspiele) Berlin ▪ Sovremennik Theater Moscow ▪ Kazan Summer Universiade ▪ Staatstheaters Saarbrücken ▪ Musikkens Hus Nordjylland Aalborg ▪ Hradec Králové Library ▪ Capitol Wrocław Music Theatre ▪ Alexandrinsky Theatre St. Petersburg ▪ Stadttheater Konstanz ▪ Classic Theatre of Opera and Ballet Astana ▪ Multifunctional auditorium GONG Ostrava-Vitkovice ▪ JAMU Orlí Theater Brno ▪ Stadium Stade ▪ Staatstheater Hannover ▪ Winterfestspielhaus Erl ▪ Aleksander Sewruk's Theater in Elbląg ▪ Berliner Philharmonie ▪ Academy of Arts Berlin ▪ Berliner Ensemble Berlin ▪ Westfälische Kammerspiele Paderborn ▪ National Theatre Brno ▪ University of Music Karlsruhe ▪ Ludwik Solski Theater Tarnow ▪ Circus Minsk ▪ Jízdecká Plzeň Theater ▪ Central Bohemian Theater Kladno ▪ Tashkent Cultural Center ▪ Sazka Arena Prague ▪ National Theater Prague (New Stage) ▪ Puppet Theater Maribor ▪ Krakow Opera ▪ Municipal Cultural and Congress Center Trutnov ▪ Puppet Theater Zadar ▪ Minsk State Academic Grand Theater of Opera and Ballet ▪ Tyumen Theater of Drama and Comedy ▪ Petr Fomenko Theater Moscow ▪ Wanda Siemoszkowa Theatre Rzeszów ▪ National Theater Prague ▪ Hybernia House Prague ▪ Potsdam Municipal Theater ▪ Mercedes-Benz Stuttgart ▪ Košice State Theater ▪ Olomouc Archdiocesan Museum ▪ Congress Center Zlín ▪ Cultural House Velenje ▪ Basilica Multifunctional area České Budějovice ▪ Puppet Theater Zagreb ▪ Slovenian National Theater Maribor ▪ Kosovel Cultural Centre Sežana ▪ J. Vrchlicky Theater Louny ▪ City Theater Jaroměř ▪ Archa Theater Prague ▪ City Theater Chomutov ▪ City Theater Nový Bydžov ▪ National Theatre Ostrava ▪ Městanská beseda Pilsen ▪ Tyl's Theater Polička ▪ Vinohrady Theater Prague ▪ House of St. Agnes of Czech Pardubice ▪ J. K. Tyl Theater Plzeň ▪ Švanda Theater Prague ▪ Broadway Theater Prague ▪ Cultural House Trbovlje ▪ City Theater Oldenburg ▪ Slovenian National Theater Ljubljana ▪ Amphitheatre Nová Gorica ▪ State Opera Zurich ▪ Reduta Theater Uherské Hradiště ▪ A. Dvořák Theater Ostrava ▪ City Theater Celje ▪ East-Bohemian Theater Pardubice ▪ ABC Theatre Prague ▪ City Theatre Slaný ▪ Horácké Theatre Jihlava ▪ Puppet Theatre Ostrava ▪ Railway Workers' House Prague ▪ Spirala Theatre Prague ▪ Municipal House of Culture Sokolov ▪ Krusnohorské Theatre Teplice ▪ Jitřenka Theatre Brno ▪ B. Němcová Theatre Františkovy Lázně ▪ West Bohemian Theatre Cheb ▪ K. Pippich Theatre Chrudim ▪ Cultural House Nové Město na Moravě ▪ Semafor Theatre Prague ▪ Drama Club Prague ▪ Smetana House Litomyšl ▪ City Theatre Děčín ▪ Culture House Čelákovice ▪ City Theatre Český Těšín ▪ Cultural House Hlučín ▪ House of Culture Pilsen ▪ Culture House Šumperk ▪ Maritime Theatre Ústí nad Labem ▪ Chamber Theatre Pilsen ▪ Velké divadlo Pilsen ▪ South Moravian Theatre Znojmo ▪ Boby Centre Brno ▪ Cultural House Králíky ▪ Museum Lanškroun ▪ Disk Theatre Prague ▪ Laterna Magika Prague ▪ Cultural House Radim ▪ O. Nedbal Theatre Tábor ▪ Cultural House Toužim ▪ Permanent Theatre Scene Klatovy ▪ House of Culture Orlová ▪ Small Stage Uherské Hradiště ▪ Theatre pod Palmovkou Prague ▪ JAMU Studio Marta Brno ▪ Spa House Darkov ▪ Cultural House Drnovice ▪ Laterna Animata Prague ▪ Moravian-Slovakian Theatre Uherské Hradiště ▪ and others..



GRADIOR TECH

GRADIOR TECH a.s.  
Křižíkova 3126/680  
CZ-612 00 Brno  
+420 515 910 700  
info@gradiortech.cz



[www.gradiortech.cz](http://www.gradiortech.cz)